

Professional Apparel

Scrubs, barrier and lab coats



**What to
wear for
every kind
of care.**

You're ready for anything. So is our apparel.

Wherever you start and end your shift, our scrubs have your back. They're designed to work as hard as you do—no matter what your day demands. And they look as good as they feel and come in a wide range of sizes, fits and fabrics made for your comfort zone. You handle the care. We handle the wear.



Easy wear, easy care. Find the style that suits you.



ave® 7

Style on the move



PerforMAX 17

Keep your cool



ComfortEase 23

Works as hard as you do



AngelStat® 29

The all-around favorite



Encore™ 34

Budget-friendly and built to last



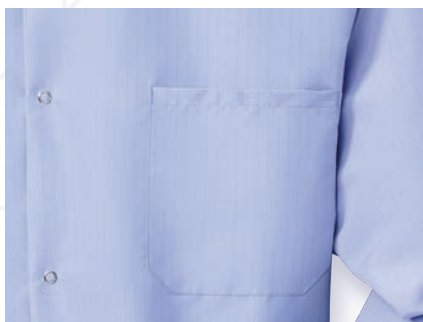
100% Cotton 36

For hyperbaric use



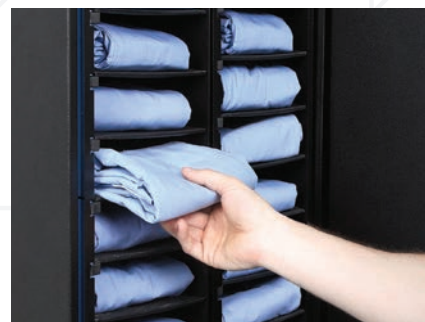
Lab Coats 39

Traditional and modern
lab coat designs



Barrier Coats 47

Added protection



Scrub Dispensing Solutions 50

Automated scrub
dispensing and tracking

Special touches call for a special process.

Our apparel customization team will partner with you to outfit your staff, your way. All it takes is a little time and collaboration to make it happen. But all good things are worth the wait.

Choose from three levels of customization.



Basic

Add a personal touch with subtle details that feel special.



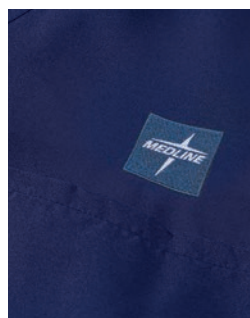
Advanced

Make it your own with custom options for size, style, color, prints and pockets.



Superior

Create a one-of-a-kind look, choosing every element, right down to the fabric.



Embroidery

Adds a personal touch and quality look that lasts.

- **Setup and design fees apply**
- **For more details, contact our Embroidery Services Department at 844-366-1685**



Silk Screening

Produces vibrant colors that withstand industrial processing.

- **Custom item number required**
- **4-week lead time**
- **Minimums: 12 each/size; 144/order**



Heat Seal

Seamlessly brings your label or logo to life.

- **Setup and design fees apply**
- **15 each/order**



Kaumagraphy

Low-cost, high-impact heat stamping sets your brand apart.

- **Custom item number required**
- **4-week lead time**
- **2,000 units for heat transfer paper**
- **Case Pack quantity minimum**
- **Set up and design fees apply**



RFID

Radio frequency identification tags track items to help prevent loss.

- **Custom item form required**
- **Approximately 10-12 week lead time**
- **Minimums: 72 units/size**
- **Cost: RFID costs built into overall cost of item**
- **Request Form**

SuiteStyles is uniform ordering made simple.

We'll create a simple, tailor-made site just for you.

Improve patient experience.

Color-by-Discipline helps patients know every employee's role at a glance.

Enhance employee satisfaction.

Keep staff in their comfort zone with many choices in style, fit and fabric.

Improve productivity.

We make ordering easy with a custom retail website built around your needs.



What's Color by Discipline?

We've implemented more than 600 Color-by-Discipline (CD) programs (and counting).

CD is a popular uniform code that helps patients, families and other staff quickly identify an employee's role by the color they're wearing.

You can assign any color to any role, but here are some of the most common color combos.

RNs & LPNs—navy (or white)
CNAs—wine
Radiology—charcoal gray
Physical Therapy—black
Respiratory Therapy—ceil blue
Lab—caribbean blue
Pharmacy—rich purple

Color-coding and ordering for OR scrubs.

When ordering scrubs, be sure to include the following parts to complete each item number: **style number, color and size.**

Item numbers for reversible unisex scrubs have a fourth part: **color-coding**, designated by a -CA, -CM, or -CF. Color-coding necks and drawstrings provide instant size identification in the laundry room, storeroom and nursing units.

	CM	CA	CF
	-CM [Medline]	-CA [Angelica*]	-CF [Fashion Seal]
XS	Yellow	Blue	Mint
S	White	Orange	Yellow
M	Green	Brown	Tan
L	Blue	Black	White
XL	Tan	Red	Pink
XXL	Wine	Green	Green
3XL	Brown	Tan	Blue
4XL	White	Yellow	Orange
5XL	Black	Blue	Red

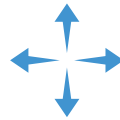


Style 4805 (top)
and 4912 (pants)
in Light Gray

ave[®]

Style on the move

- 4-way stretch fabric moves with you
- Flattering, fashion-forward fit
- Easy at-home care
- Poly/rayon/spandex



4-way stretch



Wrinkle resistant



Fade resistant



Home laundry

Find your fit.

Stocked sizes:
XXS-5XL



4-way stretch
fabric is inspired
by yoga wear.

Style 4802 (top)
and 4913 (pants)
in Hunter

Best
Seller



Unisex Standard 1-Pocket Top
Style 5910
Core Assortment
Available in Regular Sizes XXS—5XL

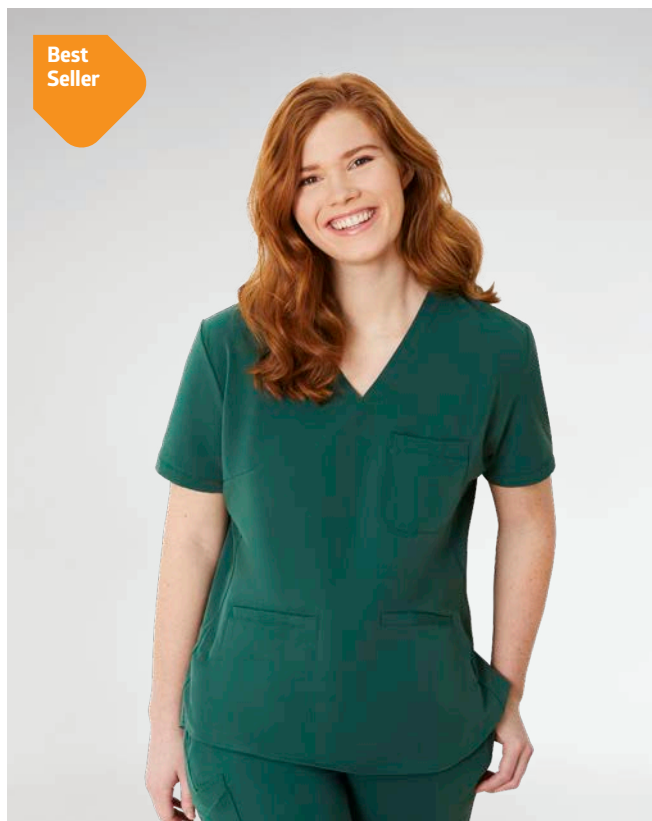


Unisex 3-Pocket Tunic Top
Style 5515
Available in Regular Sizes XXS—5XL



Women's Mock Wrap 2-Pocket Top
Style 5587
Core Assortment
Available in Regular Sizes XS—3XL

Best
Seller



Women's Three Pocket V-Neck Tunic Top
Style 4802
Core Assortment
Available in Regular Sizes XXS—5XL





Women's Maternity Top
 Style 5568
 Available in Regular Sizes XS—3XL



Women's Stretch Panel 2-Pocket Top
 Style 5565
 Available in Regular Sizes XXS—3XL

Color options for ave tops

	Style 5910	Style 5515	Style 5587	Style 4802	Style 4805	Style 4806	Style 5568	Style 5565
Black (BLK)	•	•	•	•	•	•	•	•
White (WHT)				•				
Wine (WNE)	•	•	•	•	•			•
Hunter (HTR)	•	•	•	•	•			•
Ceil Blue (CBL)	•	•	•	•	•			•
Royal Blue (RYL)	•	•	•	•	•		•	•
Caribbean Blue (CRB)	•	•	•	•	•		•	•
Navy (NVY)	•	•	•	•	•	•	•	•
Teal (TLB)	•	•	•	•				•
Light Gray (GRY)	•	•	•	•	•			•
Charcoal (CHR)	•	•	•	•	•	•		•
Red (RED)	•	•	•	•				•
Olive (OLV)	•	•	•	•	•			•
Eggplant (EGG)	•	•	•	•				•
Regal Purple (RPL)	•	•	•	•				•
Chocolate (CHC)	•			•				
Khaki (KHK)	•			•				

NEW



Women's Two Pocket V-Neck Tunic Top
 Style 4805
 Core Assortment
 Available in Regular Sizes XXS—3XL



NEW



Women's Four Pocket Oversized Tunic Top
 Style 4806
 Core Assortment
 Available in Regular Sizes XS—3XL



Women's Stretch Panel 1-Pocket Top
 Style 5564
 Discontinued—Only available while supplies last



Women's 2-Pocket Bomber Jacket
 Style 2543
 Discontinued—Only available while supplies last



Unisex 2-Pocket Track Jacket
 Style 2541
 Discontinued—Only available while supplies last

Color options for ave jackets

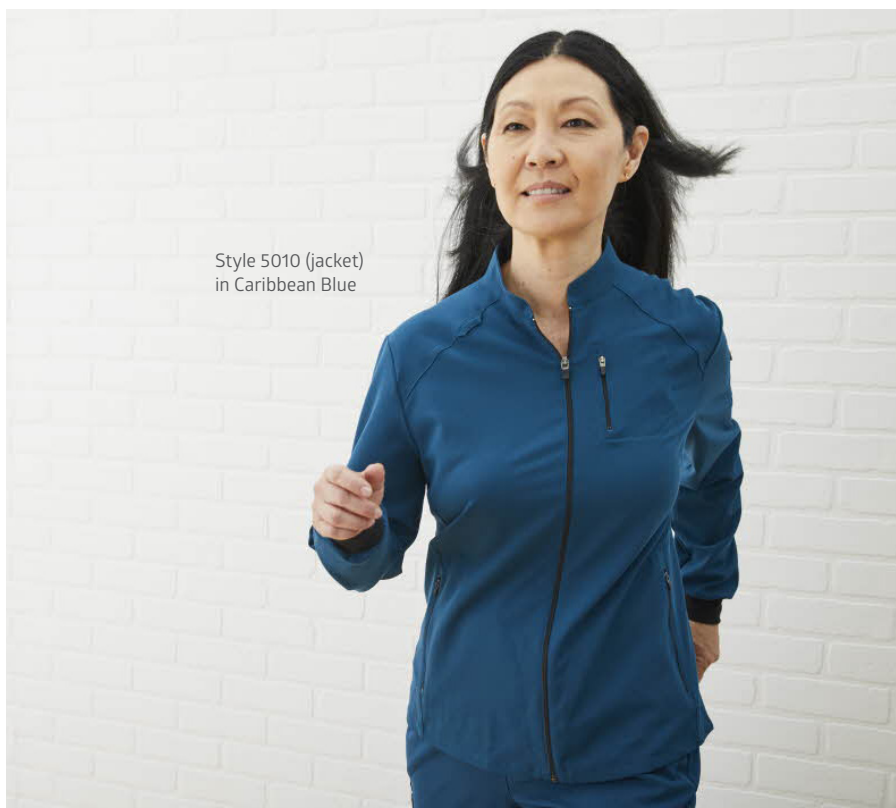
	Style 5542	Style 5010
Black (BLK)	•	•
White (WHT)	•	
Wine (WNE)	•	•
Hunter (HTR)	•	
Ceil Blue (CBL)	•	
Royal Blue (RYL)	•	•
Caribbean Blue (CRB)	•	•
Navy (NVY)	•	•
Teal (TLB)	•	
Light Gray (GRY)	•	
Charcoal (CHR)	•	•
Red (RED)	•	
Olive (OLV)	•	
Eggplant (EGG)	•	
Regal Purple (RPL)	•	
Chocolate (CHC)		
Khaki (KHK)	•	



Unisex 3-Pocket Warmup
 Style 5542
 Core Assortment
 Available in Regular Sizes XXS–5XL



Women's 4 Pocket Scrub Jacket
 Style 5010
 Core Assortment
 Available in Regular Sizes XS–3XL



Style 5010 (jacket)
 in Caribbean Blue



Unisex Drawstring Waist 6 Pocket Pant
Style 5700
Core Assortment
Available in Sizes XXS—5XL Regular, Petite and Tall



Unisex Standard Drawstring 3 Pocket Pant
Style 5900
Core Assortment
Available in Sizes XXS—5XL Regular, Petite and Tall



Women's 7 Pocket Bootcut Pant
Style 4912
Core Assortment
Available in Sizes XXS—5XL Regular, Petite and Tall





Women's Yoga Waist 1 Cargo Pocket Pant
Style 5560
Available in Sizes XS–3XL Regular



**Best
Seller**

Women's 6 Pocket Straight Leg Pant
Style 4913
Core Assortment
Available in Sizes XXS–5XL Regular, Petite and Tall



Unisex Drawstring Cargo Pant
Style 5950
Discontinued—Only available while supplies last



NEW

Women's Jogger 7 Pocket Pant
Style 2544
Core Assortment
Available in Sizes XXS–5XL Regular, Petite and Tall



Color options for ave pants

	Style 5800	Style 5700	Style 5900	Style 4912	Style 5560	Style 4913	Style 2544
Black (BLK)	•	•	•	•	•	•	•
White (WHT)		•	•	•			
Wine (WNE)	•	•	•	•	•	•	•
Hunter (HTR)	•	•	•	•	•	•	
Ceil Blue (CBL)	•	•	•	•	•	•	•
Royal Blue (RYL)	•	•	•	•	•	•	•
Caribbean Blue (CRB)	•	•	•	•	•	•	•
Navy (NVY)	•	•	•	•	•	•	•
Teal (TLB)	•	•	•	•		•	
Light Gray (GRY)	•	•	•	•	•	•	
Charcoal (CHR)	•	•	•	•	•	•	•
Red (RED)	•	•	•	•	•	•	
Olive (OLV)	•	•	•	•	•	•	
Eggplant (EGG)	•	•	•	•		•	
Regal Purple (RPL)	•	•	•	•	•		
Chocolate (CHC)		•		•			
Khaki (KHK)			•	•			

Style 5800 is discontinued—Only available while supplies last



Unisex Combo Waist Zip Fly Cargo Pant

Style 5800

Discontinued—Only available while supplies last

Available in Sizes XXS—5XL Regular, Petite and Tall

ave

How to build an item number for ave Scrubs

EXAMPLE: To order Caribbean Blue, straight leg scrub pant with cargo pockets, size medium tall:

5	5	7	0	C	R	B	M				T
4 Number Style				3 Letter Fabric Color			1 to 4 Digit Size				Optional Code for Petite (P) or Tall (T)

Complete Item Number: 5570CRBMT



Style 810 (top)
and 800 (pants)
in Ceil blue

PerformMAX

Keep your cool

- Our sportiest scrub
- Breathable, quick-dry fabric keeps you cool
- Durable, color-fast poly fabric
- 100% polyester
- Keep track of your scrubs
 - RFID Stocked Assortment in select styles and colors



Fade resistant



Moisture wicking



Quick drying



Lightweight

Find your fit.

Stocked sizes:
XS–5XL

Made to order
in Best Sellers:
XXS, 6XL

High-performance
fabric wicks away
moisture.

Style 839 (top) and
865 (pants) in Jade

Best
Seller



Unisex Reversible V-Neck Top with Chest Pocket
Style 810/R810
RFID Stocked Assortment in Core Colors

Color options for PerformMAX tops

	Style 810	Style R810	Style 881	Style 839	Style 829	Style R829
Black (DKW)	CA	CA	●	●	●	●
Wine (JWN)	CA		●	●	●	
Jade (NTJ)	CA		●	●	●	
Evergreen (JEG)	CA		●	●	●	
Ceil (NTH)	CA CM	CA	●	●	●	●
Royal (JRL)	CA		●	●	●	
Caribbean (JCB)	CA	CA	●	●	●	●
Navy (NNT)	CA CM	CA	●	●	●	●
Misty (NTZ)	CA CM		●	●	●	
Charcoal (CHR)	CA CM				●	

● = No color-coded neck line
CA = Angelica color-coded neck line
CM = Medline color-coded neck line



Ladies Mock Wrap 2-Pocket Tunic Top with Side Vents and Elastic Back
Style 881



Ladies Pullover V-Neck 3-Pocket Tunic Top
 Style 839
 Core Assortment



Unisex Snap Front Long Sleeve Knit Cuff 2-Pocket Jacket
 Style 829/R829
 RFID Stocked Assortment in Core Colors



Style 810 (top)
 and 800 (pants)
 in Jade

Color options for PerformMAX pants

	Style 800	Style R800	Style 850	Style 865
Black (DKW)	CA	CA	●	●
Wine (JWN)	CA		●	●
Jade (NTJ)	CA		●	●
Evergreen (JEG)	CA		●	●
Ceil (NTH)	CA CM	CA	●	●
Royal (JRL)	CA		●	●
Caribbean (JCB)	CA	CA	●	●
Navy (NNT)	CA CM	CA	●	●
Misty (NTZ)	CA CM		●	●
Charcoal (CHR)	CA CM			

● = No color-coded drawstrings
CA = Angelica color-coded drawstrings
CM = Medline color-coded drawstrings

Best
Seller



Unisex Reversible Drawstring 1-Pocket Pant
Style 800/R800
RFID Stocked Assortment in Core Colors
Made to order in tall in select colors and sizes



Unisex Elastic Waistband 3-Pocket Cargo Pant
Style 850
Made to order in tall (T) in select colors and sizes



Ladies Back Elastic Tie Waistband Modern Fit 5-Pocket Pant
Style 865
Core Assortment
Made to order in tall (T) and petite (P) in select colors and sizes



How to build an item number for PerformMAX Scrubs

EXAMPLE: To order Evergreen, scrub pants with cargo pockets, size extra-small, tall:

8	5	0	J	E	G	X	S			T	-		
3 Number Style			3 Letter Fabric Color			1 to 4 Digit Size		+ Optional Code for Petite (P) or Tall (T)		2 Letter Drawstring or Neck Code			
Complete Item Number: 850JEGXST													



Style 910 (top)
and 900 (pants)
in Ceil

ComfortEase™

Works as hard as you do

- On budget, on trend
- Durable scrubs are wrinkle- and fade-resistant
- 65% poly/35% cotton

Style 8851 (top)
and 8865 (pants)
in Royal



Durable



Fade resistant



Wrinkle
resistant



Industrial
laundry

Find your fit.

Stocked sizes:
XS-5XL

Made to order
in Best Sellers:
XXS, 6XL

Wrinkle-resistant
fabric is ready to
wear right out of
the wash.

Style 8800 (tunic top)
and 9351 (pant) in Black

ComfortEase

Best
Seller



Unisex Reversible V-Neck 1-Pocket Top
Style 910
Core Assortment
Made to order in Long (L) in select colors and sizes



**Ladies Non-Reversible V-Neck
2-Pocket Top with Side Vents**
Style 8800

Color options for ComfortEase tops

	Style 910	Style 8832	Style 8800	Style 8851	Style 8815
Wine (JWN)	CM	●	●	●	●
Seaspray (JSS)	CM	●	●	●	
Jade (JTJ)	CM	●			
Evergreen (JEG)	CM	●	●	●	●
Caribbean Blue (JCB)	CM	●	●	●	●
Ceil Blue (JTH)	CM	●	●	●	●
Royal Blue (JRL)	CM	● CM	●	●	●
Midnight Blue (JNT)	CM	● CM	●	●	●
Rich Purple (JPP)	CM	●	●	●	●
White (XTQ)	CM	●	●	●	●
Black (DKW)	CM	●	●	●	

● = No color-coded neck line CM = Medline color-coded neck line



Unisex Snap Front Long Sleeve Knit Cuff 2-Pocket Jacket
Style 8832

Style 8851 (top)
and 8865 (pants)
in Ceil blue



Best
Seller



Unisex Reversible Drawstring 1-Pocket Pant
Style 900
Core Assortment

Color options for ComfortEase pants

	Style 900	Style 950	Style 8850	Style 8865	Style 9351
Wine (JWN)	CM	CM	●	●	
Seaspray (JSS)	CM	CM	●	●	
Jade (JTJ)	CM	CM			
Evergreen (JEG)	CM	CM	●	●	●
Caribbean Blue (JCB)	CM	CM	●	●	●
Ceil Blue (JTH)	CM	CM	●	●	
Royal Blue (JRL)	CM	CM	●	●	●
Midnight Blue (JNT)	CM	CM	●	●	●
Rich Purple (JPP)	CM	CM	●	●	
White (XTQ)	CM	CM	●	●	
Black (DKW)	CM	CM	●	●	●

● = No color-coded drawstrings CM = Medline color-coded drawstrings



Unisex Non-Reversible Drawstring 3-Pocket Cargo Pant
Style 950
Made to order in tall (T) in select colors and sizes

Made
to Order



ComfortEase Skirt
Style 944
Core Assortment





Unisex Non-Reversible Elastic Waistband 3-Pocket Cargo Pant
 Style 9351
 Made to order in tall (T) in select colors and sizes



Ladies Elastic Waistband Modern Fit 5-Pocket Cargo Pant
 Style 8865
 Core Assortment
 Made to order in tall (T) and petite (P) in select colors and sizes

How to build a item number for ComfortEase Scrubs

EXAMPLE: To order a Seaspray, reversible drawstring 1-pocket pant, size M, with Medline drawstring color-coding:

9	0	0	J	S	S	M					-	C	M		
3 to 4 Number Style			3 Letter Fabric Color			1 to 4 Digit Size				+	Optional Code for Petite (P) or Tall (T)			2 Letter Drawstring or Neck Code	
Complete Item Number: 900JSSM-CM															



Style 893 (top)
and 854 (pants)
in Charcoal

AngelStat®

The all-around favorite

- Our No. 1 scrub
- Softens with every wash
- Durable scrubs; stand up to industrial washing
- Keep track of your scrubs
 - RFID Stocked Assortment in select styles and colors
- 55% cotton/45% poly



Durable



Softens when
washed



Industrial
laundry

Find your fit.

Stocked sizes:
XS–5XL

Made to order
in Best Sellers:
XXS, 6XL

Fabric softens
with every wash.

Style M630 (top)
and M600 (pants)
in Ceil Blue



Made
to Order



Unisex Reversible V-Neck No Pocket Top
Style 612
Made to Order Sizes: S-3XL

Best
Seller



Unisex Reversible V-Neck 1-Pocket Top
Style M610/610/R610
Core Assortment
RFID Stocked Assortment in Core Colors



Unisex Reversible V-Neck 2-Pocket Top
Style M630/630



Ladies Pullover V-Neck 2-Pocket Tunic Top
Style 893
Core Assortment



Ladies Snap Front Crew Neck 2-Pocket Jacket
Style 851



Unisex Snap Front Knit Cuff 2-Pocket Jacket
Style 849/R849
Core Assortment
RFID Stocked Assortment in Core Colors

AngelStat

Color options for AngelStat tops

	Style M610/ 610	Style R610	Style 849	Style R849	Style 893	Style M630/ 630	Style 851	Style 612
Jade (NTJ)	CA CM	CA CM	● CA	●	●	CA	●	
Ceil Blue (NTH)	CA CM	CA CM	● CA CM	●	●	CA CM	●	CM
Misty (NTZ)	CA CM	CA CM	●	●	●	CA CM	●	
Charcoal (NCC)	CM		●		●	CM		
Regal Purple (NRP)	CA		●		●	CA		
Navy (NNT)	CA CM		● CA CM		●	CA	●	
Sapphire (NHT)	CA CM	CA CM	● CA CM	●	●	CA CM	●	CM
Peacock (NBT)	CA		●		●		●	
Hunter (NHG)	CA		●		●	CA		
Emerald (NJT)	CA		●		●	CA		
Raspberry (NTR)	CA CM		●		●	CA		
Black (BLK)	CA CM		●					

● = No color-coded neck line
CA = Angelica color-coded neck line
CM = Medline color-coded neck line

Made
to Order



Unisex Reversible Drawstring No Pocket Pant
Style 640
Made to Order Sizes: S-3XL

Best
Seller



Unisex Reversible Drawstring 1-Pocket Pant
Styles M600/600/R600 and 601
Core Assortment
601 is made to order in tall in select colors and sizes
RFID Stocked Assortment in Core Colors



Unisex Elastic Waistband 2-Pocket Cargo Pant
Style 674
Include M for regular length
Made to order in long (L) in select colors and sizes



Ladies Elastic Waistband Inside Drawcord No Pocket Pant
Style 854
Core Assortment

Color options for AngelStat pants

	M600/ 600	Style R600	Style 674	Style 854	Style 640	Style 601
Jade (NTJ)	CA CM	CA CM	•	•		
Ceil Blue (NTH)	CA CM	CA CM	•	•	CM	CM
Misty (NTZ)	CA CM	CA CM	•	•		CM
Charcoal (NCC)	CM		•	•		
Regal Purple (NRP)	CA		•			
Navy (NNT)	CA CM		•	•		
Sapphire (NHT)	CA CM	CA CM	•	•	CM	
Peacock (NBT)	CA CM		•	•		
Hunter (NHG)	CA		•	•		
Emerald (NJT)	CA		•			
Raspberry (NTR)	CA CM		•	•		
Black (BLK)	CA CM					

• = No color-coded drawstrings
CA= Angelica color-coded drawstrings
CM=Medline color-coded drawstrings

Accessories



Reusable Surgical Cap

MDT012116MTY | White cloth ties fasten in back
Misty Green
Made to Order Item

55% cotton/45% polyester

How to build an item number for AngelStat Scrubs

EXAMPLE: To order a Ceil Blue, elastic waist scrub pant with cargo pockets, size medium long:

6	7	4	N	T	H	M				L	-			
3 Number Style			3 Letter Fabric Color			1 to 4 Digit Size				+	Optional Code for Long (L)		2 Letter Drawstring or Neck Code	

Complete Item Number: 674NTHML

Encore™ OR scrubs

Budget-friendly and built to last

- Classic style and fit
- Ultra-light comfort
- 55% cotton/45% poly
- Case pack quantities



Durable



Industrial laundry

Color options for Encore.

	Style 710	Style 700	Style 730
Ceil (PTH)	CF CM	CF CM	CF CM
Jade (PTJ)	CF CM	CF CM	CF CM
Misty (PTZ)	CF CM	CF CM	CF CM

Find your fit.

Stocked sizes:
XS-3XL

CA = Angelica color-coded neck line or drawstrings
CF = Fashion Seal color-coded neck line or drawstrings
CM = Medline color-coded neck line or drawstrings

Super-soft
ring spun fabric



How to build an item number for Encore Scrubs

EXAMPLE: To order a Misty, reversible, one-pocket scrub top, size XXX-large, with Medline color coding:

7	1	0	p	T	J	X	X	X	L	-	C	M
3 Number Style			3 Letter Fabric Color			1 to 4 Digit Size				2 Letter Drawstring or Neck Code		

Complete Item Number: 710PTJXXXL-CM

Best
Seller



Unisex Reversible V-Neck 1-Pocket Top
Style 710
Core Assortment

Best
Seller



Unisex Reversible Drawstring 1-Pocket Pant
Style 700
Core Assortment

Encore



Unisex Reversible V-Neck 2-Pocket Top
Style 730



100% Cotton

For hyperbaric use

- Reversible scrubs for maximum versatility
- 100% cotton for added safety in hyperbaric chambers
- Hyperbaric stamping available



100% cotton



One-pocket top



Hyperbaric stamping

Find your fit.

Stocked sizes:
S-4XL

Color options for 100% Cotton

	Style 649*	Style 648*	Style 659	Style 658
Jade (MJS)	CA	CA		
Ceil (MHS)	CA	CA	CM	CM
Misty (MZS)	CA	CA	CM	CM

CA = Angelica color-coded neck line or drawstrings
CM = Medline color-coded neck line or drawstrings

*Styles 648 and 649 are NOT intended for use in hyperbaric units. They contain polyester drawstrings, thread and labels.



Unisex Reversible 1-Pocket Hyperbaric Unit Top
Style 658



Unisex Reversible 2-Pocket Top
Style 648



Unisex Reversible Drawstring Hyperbaric Unit Pant
Style 659



Unisex Reversible Drawstring 1-Pocket Pant
Style 649

100% Cotton

How to build an item number for 100% cotton scrubs

EXAMPLE: To order a Misty, reversible, drawstring scrub pant, pre-stamped with "hyperbaric unit", 100% cotton, size XXL, with Medline color coding:

6	5	9	M	Z	S	X	X	L		-	C	M
3 Number Style			3 Letter Fabric Color			1 to 4 Digit Size				2 Letter Drawstring or Neck Code		

Complete Item Number: 659MZSXXL-CM



Lab Coats

Traditional and modern lab coat designs

Choose the features, fabric and styles that fit the way you work. Our selections include all the advantages you could ask for—with tailored looks, easy-wear fabrics, lots of pocket and storage options, and optional antimicrobial treatment.

Propel

- The industry standard
- Traditional light 80% polyester/20% cotton

Refine

- Classic professional look and feel
- Soft 100% cotton that never goes out of style

Perform

- Modern style and material
- Comfortable stretch fabric is made for industrial laundering



Durable



Wrinkle resistant



Industrial
laundry

Multiple pockets
for extra storage



Propel

80% Polyester 20% Cotton



Unisex Consultation Poplin 3-Button Lab Coat

Style MDT10

1 left chest pocket | 2 lower pockets

Length: 30" | Available in 32-58, White (WHT)



Women's Consultation Poplin 2-Button Lab Coat

Style 88018

1 left chest pocket | 2 lower pockets

Princess seams; not recommended for embroidery

Length: 29" | Available in 4-30 (dress size), White (QHW)



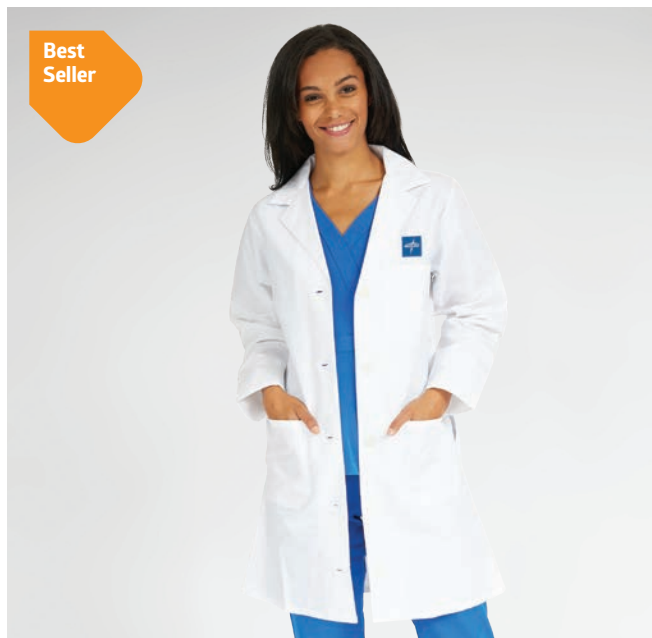
Unisex Consultation Poplin Full Zip Front Smock

Style 87005 | 1 left chest pocket | 2 lower pockets | Length: 31"

XS-5XL White (QHW)

XS-3XL Navy (DNW)

XS-4XL Light Blue (RCW)



Women's Staff Length Poplin 5-Button Lab Coat*

Style MDT11 (WHTST) includes Silvertouch antimicrobial* treatment

1 pencil-divided left chest pocket | 2 lower pockets

One piece back belt, princess seams and side slashes

Length: 36" | Available in sizes 2-36 (dress size), White (WHT)

*These antimicrobial properties are built in to protect the product. The product does not protect users or others against bacteria, viruses, germs or other disease-causing organisms.

Best
Seller



Men's Staff Length Poplin 5-Button Lab Coat

Style MDT12 (WHTST) includes SilverTouch antimicrobial* treatment
1 pencil-divided left chest pocket | 2 lower pockets | Side slashes
Length: 39" | Available in sizes 32–60, White (WHT)

Best
Seller



Unisex Staff Length Poplin 4-Button Lab Coat with SilverTouch antimicrobial* treatment

Style 87052STIP–2 lower iPad pockets (shown)
1 left chest pocket | 2 inside pockets | Sewn-down back belt and side slashes
Length: 39" | Available in 2XS–3XL, White



Men's Full Length Poplin 5-Button Lab Coat

Style MDT14
1 pencil-divided left chest pocket | 2 lower pockets
Regular Length: 43" | Available in sizes 34–56, White (WHT)
Tall Length: 47" | Available in sizes 38–52, White (WHT)



Women's Full Length Poplin 4-Button Lab Coat

Style MDT13
1 left chest pocket | 2 lower pockets
2-button adjustable back belt and princess seams
Length: 40" | Available in sizes XS–3XL, White (WHT)

*These antimicrobial properties are built in to protect the product. The product does not protect users or others against bacteria, viruses, germs or other disease-causing organisms.



Unisex Full Length Poplin 6-Snap Front Lab Coat with Cuff

Style 87026

1 left chest pocket | 2 lower pockets | Knit cuff and side slashes
Length: 42" | Available in XS-3XL, White (QHW)



Unisex Full Length Poplin 4-Button 1-Snap Lab Coat

Style 87050

1 left chest pocket | 2 lower pockets | Knit cuff and side slashes
Length: 39" | Available in XS-3XL, White (QHW)

Find the right size Propel lab coat

Women's size chart

Bust	33-34.5	35-36.5	37-39	40-42	42.5-45	45.5-48	49-52	52-56	57-60
Style 88018	2	4-6	8-10	12-14	16	18-20	22-24	26-28	30
Style MDT11	2	4	6-8	10-12	12-14	16-18	20	22-24	26
Style MDT13	-	0	1	2	3	4	5	6	-

Men's and Unisex size chart

Chest	34-36	36-38	38-40	42-44	46-48	50-52	54-56	58-60	62-64
Style MDT10	30-32	34-36	38-40	42-44	46-48	50	52-54	56	58
Style 87005	2XS	XS	S	M	L	XL	2XL	3XL	4XL
Style 87026	2XS	XS	S	M	L	XL	2XL	3XL	4XL
Style 87050	2XS	XS	S	M	L	XL	2XL	3XL	4XL
Style 87052STIP	XXS	XS	S	M	L	XL	2XL	3XL	4XL
Style MDT12	32	34	36-38	40	42-44	46-48	50-52	54-56	58-60
Style MDT14	32	34	36-38	40	42-44	46-48	50-52	54-56	58-60

Refine

100% cotton



Men's Full Length Heavyweight Twill 5-Knot Button Lab Coat
 Style MDT17
 1 pencil-divided left chest pocket | 2 lower pockets
 Knot button back belt and side slashes
 Regular Length: 44" | Available in sizes 28-56, White (WHT)
 Tall Length: 48" | Available in sizes 28-56, White (WHT)



Women's Full Length Heavyweight Twill 4-Knot Button Lab Coat
 Style MDT19
 1 left chest pocket | 2 lower pockets | One piece back belt and princess seams
 Length: 38" | Available in sizes 2XS-5XL, White (WHT)

Find the right size Refine lab coat

Women's size chart

Bust	33-34.5	35-36.5	37-39	40-42	42.5-45	45.5-48	49-52	52-56	57-60
Style MDT19	XXS	XS	S	M	L	XL	2XL	3XL	4XL

Men's and Unisex size chart

Chest	34-36	36-38	38-40	42-44	46-48	50-52	54-56	58-60	62-64
Style MDT17	32	34	36-38	40	42-44	46-48	50-52	54-56	58-60

Perform

56% cotton/42% Polyester/2% Lastol

NEW



Unisex Staff Length 6 Pocket Lab Coat
Style 1880
Available in sizes XS-5XL, White (WHT)



NEW



Unisex Consultation Length 5 Pocket Lab Coat
Style 1890
Available in sizes XS-5XL, White (WHT)



NEW



Ladies Staff Length 6 Pocket Lab Coat
Style 1930
Available in sizes XS-5XL, White (WHT)



NEW



Ladies Consultation Length 5 Pocket Lab Coat
Style 1940
Available in sizes XS-5XL, White (WHT)



Find the right size Perform lab coat

Women's size chart

Bust	33-34.5	35-36.5	37-39	40-42	42.5-45	45.5-48	49-52	52-56	57-60
Style 1940	XS	S	M	L	XL	2XL	3XL	4XL	5XL
Style 1930	XS	S	M	L	XL	2XL	3XL	4XL	5XL

Men's and Unisex size chart

Chest	34-36	36-38	38-40	42-44	46-48	50-52	54-56	58-60	62-64
Style 1880	XS	S	M	L	XL	2XL	3XL	4XL	5XL
Style 1890	XS	S	M	L	XL	2XL	3XL	4XL	5XL

How to build an item number for Lab Coats

EXAMPLE: To order a navy, zip front smock, size M:

8	7	0	0	5	D	N	W	M		
Number Style					3 Letter Fabric Color			1 to 3 Digit Size		

Complete Item Number: 87005DNWM





Barrier Coats

Added protection

- Water resistant (tested to AATC 127 and AATCC 42)
- Comfortable and Breathable (tested to ASTM E96)
- Not made with PFOS/PFOA
- Low linting (ISO 19073-10)



Durable



Industrial laundry
100 wash cycles



Breathable



Moisture resistant



Low-linting



Multiple pockets
for extra storage

Style MDT046815


Unisex Barrier Lab Coat

Style 6623 | 1 left chest pocket | 2 lower pockets
 XS-5XL White (BQW)
 XS-5XL Navy (BNW)
 Style 6623 | Without pockets
 S-2XL White (BQWNP)
 S-3XL Navy (NPBNW)

100% polyester front,
 55% cotton/45%
 polyester back


Unisex AngelStat Barrier Lab Coat

Style 6620BLH | 2 lower patch pockets
 XS-4XL White
 Style 6221BLC | 2 lower patch pockets
 XS-4XL Cell Blue

99% polyester/1% carbon front,
 55% cotton/45% polyester back


Men's ResiStat Protective Lab Coat

Style MDT046805 | 1 left chest pocket | 2 lower pockets
 XS-3XL White
 Style MDT046805NP | Without pockets
 XS-4XL White (NP)

99% polyester/
 1% carbon fiber
 fluid-resistant
 material


Men's ResiStat Protective Lab Coat

Style MDT046811 | 1 left chest pocket | 2 lower pockets
 XS-3XL Light Blue (BLC)

99% polyester/
 1% carbon fiber
 fluid-resistant
 material



Women's ResiStat Protective Lab Coat
Style MDT046815 | 1 left chest pocket | 2 lower pockets
XS-3XL White

99% polyester/
1% carbon
front and back



Unisex Barrier Lab Coat
Style MDT046883 | 2 lower pockets | Short
XS-3XL White

100% polyester front,
55% cotton/45%
polyester back

Customizations

Available upon request, these custom features can be added at a minimum order quantity.

- No side slit opening to pants
- No cuffs
- Elastic band cuffs
- Choose from existing Barrier Coat fabrics and colors
- No pockets

Take control of your scrubs with ScrubTrak

ScrubTrak is an automated system that dispenses scrubs and tracks inventory so you don't have to.



Reduce scrub loss

Reduce inventory shrinkage by up to 90% and laundering costs by 35%.¹



Increase productivity

Similar to a vending machine, ScrubTrak is easy to use so staff can focus on delivering care, not what to wear.



Boost infection control and compliance

Comply with AORN's recommendation for laundering healthcare textiles to avoid the spread of infectious bacteria.

Small Footprint. Each ScrubTrak unit measures 78" high x 38 3/4" wide x 23 1/4" deep.



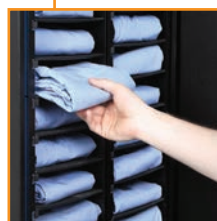
High Capacity. ScrubTrak's dispensing unit holds up to two satellite units with a capacity of 128 scrubs per dispenser.



Rapid Return. Up to three soiled scrubs can be returned per session in just seconds.



Flexible and Rapid Dispensing. ScrubTrak dispenses clean scrubs in seconds with mix-and-match sizing options.



Low Maintenance. Simply fold and stow the items to be dispensed.

¹ Intelligent Dispensing Solutions website
<https://www.scrubtrak.com/inventory-management-control>

CabiNet RFID Machines

Take back control of assets while reducing inventory costs.



Reduce linen loss

Help staff and vendors track scrubs, linens, gowns, lab coats, towels, mops and more.



Track item to individual users

Check usage, adjust credits and add users all in one platform.



Intelligent system

Stock levels viewed Online with automated alerts.

High Capacity. Holds up to 350 scrubs fitted with RFID Chips.



Low Maintenance. Fast to re-stock and load, no pairing necessary.



Convenient Usage. Easy to use, no size entry required.

Small Footprint. Each CabiNet unit measures 6 1/2' high x 4" wide x 2' deep.



Easy Access. Two sliding doors open with shelves.

Flexible Organization. Dispenser and Return Unit can be placed separately.

Note: Installation & Training fees will be charged separately and vary depending on configuration. Warranty solutions also available upon request.

SaniCenter vending machine

PPE and more—at the push of a button



Customize with your facility branding



Protect visitors and staff with push-button ease

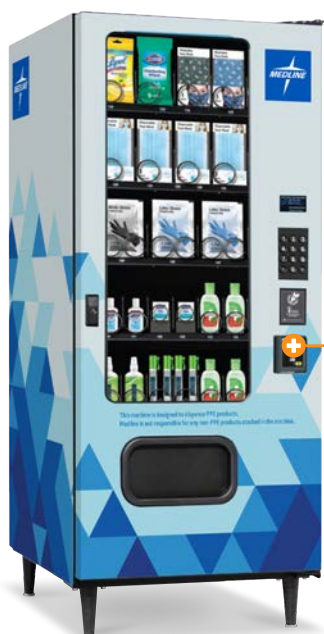


Contact-free, on demand

Features

- LED lighting provides product visibility
- Large, easy-to-use customer interface features LED display
- Depending on the machine, patrons can pay with credit/debit or mobile, while staff can access with badge, proximity card or barcode reader
- Keeps customers satisfied with money-back vend delivery sensor system
- Additional coils, motors and dividers available—customize a configuration to suit your unique product selection
- Americans with Disabilities Act (ADA) compliant

Design can be customized with your facility branding.



PPECCMACHINES

Credit, debit and mobile reader



PPEIVMACHINE

Proximity card/Barcode reader

These machines are designed to dispense PPE products. Medline is not responsible for any non-PPE products stocked in the machine.

Notes

Notes

Notes

[illegible]

Notes

Notes

**Scrub into style
and comfort.**
Contact your Medline
representative to
outfit your staff.



**We make
healthcare
run better™**

Medline Industries, LP
Three Lakes Drive, Northfield, IL 60093
Medline United States | 1-800-MEDLINE (633-5463)
medline.com | info@medline.com

Medline Canada
1-800-268-2848 | medline.ca | canada@medline.com
Medline México
01-800-831-0898 | medlinemexico.com | mexico@medline.com

Follow us    