

# Professional Apparel

Scrubs, barrier and lab coats.



**What to  
wear for  
every kind  
of care.**







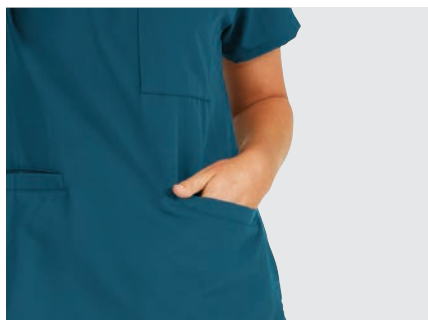
# You're ready for anything. So are our overall apparel.

Wherever you start and end your shift, our scrubs have your back. They're designed to work as hard as you do—no matter what your day demands. And they look as good as they feel in a healthy range of sizes, fits and fabrics made for your comfort zone. You handle the care. We handle the wear.





# Easy wear, easy care. Find the style that suits you.



**ave®** 9  
Style on the move.



**PerforMAX** 17  
Keep your cool.



**ComfortEase** 23  
Works as hard as you do.



**wORks™** 28  
All-day comfort in the OR.



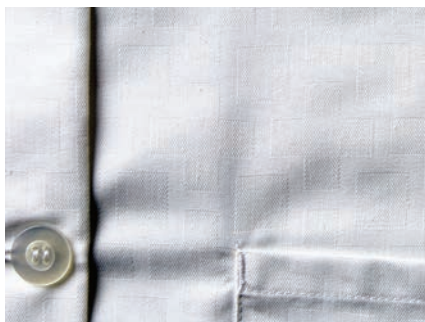
**AngelStat®** 31  
The all-around favorite.



**Encore™** 36  
Budget-friendly and built to last.



**100% Cotton** 38  
For hyperbaric use.



**Lab Coats** 41  
Tried-and-true classics made modern.



**Barrier Coats** 46  
Added protection.

# Special touches call for a special process.

Our apparel customization team will partner with you to outfit your staff, your way. All it takes is ample time and collaboration to make it happen. But all good things are worth the wait.

Choose from three levels of customization.



## Basic

Add a personal touch with subtle details that feel special.



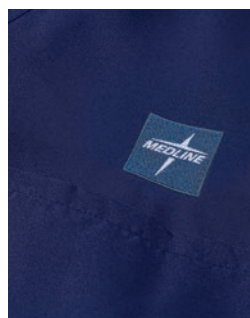
## Advanced

Make it your own with custom options for size, style, color, prints and pockets.



## Superior

Create a one-of-a-kind look, choosing every element, right down to the fabric.



### Embroidery

Adds a personal touch and quality look that lasts.

- **Setup and design fees apply**
- **For more details, contact our Embroidery Services Department at 844-366-1685**



### Silk Screening

Produces vibrant colors that withstand industrial processing.

- **Custom item number required**
- **4-week lead time**
- **Minimums: 12 each/size; 144/order**



### Heat Seal

Seamlessly brings your label or logo to life.

- **Setup and design fees apply**
- **15 each/order**



### Kaumagraphy

Low-cost, high-impact heat stamping sets your brand apart.

- **Custom item number required**
- **4-week lead time**
- **2,000 units for heat transfer paper**
- **Case Pack quantity minimum**
- **Set up and design fees apply**



### RFID

Radio frequency identification tags track items to help prevent loss.

- **Custom item form required**
- **Approximately 10-12 week lead time**
- **Minimums: 72 units/size**
- **Cost: RFID costs built into overall cost of item**
- **Request Form**



# SuiteStyles is uniform ordering made simple.

We'll create a simple, tailor-made site just for you.

## Improve patient experience.

Color-by-Discipline helps patients know every employee's role at a glance.

## Enhance employee satisfaction.

Keep staff in their comfort zone with many choices in style, fit and fabric.

## Improve productivity.

We make ordering easy with a custom retail website built around your needs.



## What's Color by Discipline?

We've implemented more than 600 Color-by-Discipline (CD) programs (and counting).

CD is a popular uniform code that helps patients, families and other staff quickly identify an employee's role by the color they're wearing.

You can assign any color to any role, but here are some of the most common color combos.

RNs & LPNs—navy (or white)

CNAs—wine

Radiology—charcoal gray

Physical Therapy—black

Respiratory Therapy—ceil blue

Lab—caribbean blue

Pharmacy—rich purple

# Color-coding and ordering for OR scrubs.

When ordering scrubs, be sure to include the following parts to complete each item number: **style number, color and size.**

Item numbers for reversible unisex scrubs have a fourth part: **color-coding**, designated by a -CA, -CM, or -CF. Color-coding necks and drawstrings provide instant size identification in the laundry room, storeroom and nursing units.

	<b>CM</b>	<b>CA</b>	<b>CF</b>
	-CM [Medline]	-CA [Angelica*]	-CF [Fashion Seal]
XS	Yellow	Blue	Mint
S	White	Orange	Yellow
M	Green	Brown	Tan
L	Blue	Black	White
XL	Tan	Red	Pink
XXL	Wine	Green	Green
3XL	Brown	Tan	Blue
4XL	White	Yellow	Orange
5XL	Black	Blue	Red



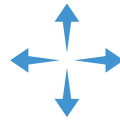
Style 5564 (top)  
and 5580 (pants)  
in Charcoal



**ave<sup>®</sup>**

## Style on the move.

- 4-way stretch fabric moves with you
- Flattering, fashion-forward fit
- Easy at-home care
- Poly/rayon/spandex



4-way stretch



Wrinkle resistant



Fade resistant



Home laundry

### Find your fit.

Stocked sizes:  
XXS-5XL

4-way stretch  
fabric is inspired  
by yoga wear.



Style 5582 (top)  
and 5570 (pants)  
in Caribbean

ave

**Best  
Seller**



**Unisex Standard 1-Pocket Top**  
Style 5910  
Core Assortment



**Unisex 3-Pocket Tunic Top**  
Style 5515



**Women's Mock Wrap 2-Pocket Top**  
Style 5587  
Core Assortment

**Best  
Seller**



**Women's 3-Pocket Badge Loop Top**  
Style 5582  
Core Assortment





**Women's Maternity Top**  
Style 5568



**Women's Stretch Panel 2-Pocket Top**  
Style 5565

### Color options for ave tops.

	Style 5910	Style 5515	Style 5582	Style 5587	Style 5564	Style 5565	Style 5568
Black (BLK)	•	•	•	•	•	•	•
White (WHT)	•		•				
Wine (WNE)	•	•	•	•	•	•	
Hunter (HTR)	•	•	•	•	•	•	
Ceil Blue (CBL)	•	•	•	•	•	•	•
Royal Blue (RYL)	•	•	•	•	•	•	•
Caribbean Blue (CRB)	•	•	•	•	•	•	•
Navy (NVY)	•	•	•	•	•	•	•
Teal (TLB)	•	•	•	•		•	
Light Gray (GRY)	•	•	•	•	•	•	
Charcoal (CHR)	•	•	•	•	•	•	•
Red (RED)	•	•	•	•	•	•	
Olive (OLV)	•	•	•	•	•	•	•
Eggplant (EGG)	•	•	•	•		•	
Regal Purple (RPL)	•	•	•	•	•	•	



**Women's Stretch Panel 1-Pocket Top**  
Style 5564  
Discontinued—Only available while supplies last

Color options for ave jackets.

	Style 5542	Style 2543	Style 2541
Black (BLK)	•	•	•
White (WHT)	•		
Wine (WNE)	•		
Hunter (HTR)	•		
Ceil Blue (CBL)	•	•	•
Royal Blue (RYL)	•	•	•
Caribbean Blue (CRB)	•		
Navy (NVY)	•	•	•
Teal (TLB)	•		
Light Gray (GRY)	•		
Charcoal (CHR)	•	•	•
Red (RED)	•		
Olive (OLV)	•		
Eggplant (EGG)	•		
Regal Purple (RPL)	•		



Unisex 3-Pocket Warmup  
Style 5542  
Core Assortment



Women's 2-Pocket Bomber Jacket  
Style 2543



Unisex 2-Pocket Track Jacket  
Style 2541





**Unisex Combo Waist Zip Fly Cargo Pant**  
Style 5800  
Core Assortment



**Unisex Standard Drawstring Pant**  
Style 5900  
Core Assortment



**Women's Combo Waist Bootcut Pant**  
Style 5580  
Core Assortment



**Women's Yoga Waist Pant**  
Style 5560



**Women's Elastic Waist Cargo Pant**  
Style 5570  
Core Assortment



**Unisex Drawstring Cargo Pant**  
Style 5950  
Discontinued—Only available while supplies last



**Women's Jogger 7 Pocket Pant**  
Style 2544  
Core Assortment



## Color options for ave pants.

	Style 2544	Style 5900	Style 5580	Style 5560	Style 5570	Style 5800	Style 5700	Style 5950
Black (BLK)	•	•	•	•	•	•	•	•
White (WHT)		•						
Wine (WNE)	•	•	•	•	•	•	•	•
Hunter (HTR)		•	•	•	•	•		
Ceill Blue (CBL)	•	•	•	•	•	•	•	•
Royal Blue (RYL)	•	•	•	•	•	•	•	•
Caribbean Blue (CRB)	•	•	•	•	•	•	•	•
Navy (NVY)	•	•	•	•	•	•	•	•
Teal (TLB)		•	•		•	•		
Light Gray (GRY)		•	•	•	•	•		
Charcoal (CHR)	•	•	•	•	•	•	•	•
Red (RED)		•	•	•	•			
Olive (OLV)		•	•	•	•	•		•
Eggplant (EGG)		•	•		•	•		
Regal Purple (RPL)		•	•		•	•		



Unisex Drawstring Waist 6 Pocket Pant  
Style 5700  
Core Assortment



ave

## How to build an item number for ave Scrubs.

**EXAMPLE:** To order Caribbean Blue, straight leg scrub pant with cargo pockets, size medium tall:

5	5	7	0	C	R	B	M				T
4 Number Style				3 Letter Fabric Color			1 to 4 Digit Size				Optional Code for Petite (P) or Tall (T)

**Complete Item Number: 5570CRBMT**





Style 810 (top)  
and 800 (pants)  
in Ceil blue

# PerforMAX

## Keep your cool.

- Our sportiest scrub
- Breathable, quick-dry fabric keeps you cool
- Durable, color-fast poly fabric
- 100% polyester



Fade resistant



Moisture wicking



Quick drying



Lightweight

### Find your fit.

Stocked sizes:  
XS-5XL

Made to order  
in Best Sellers:  
XXS, 6XL

High-performance  
fabric wicks away  
moisture.



Style 839 (top) and  
865 (pants) in Jade

Best Seller



**Unisex Reversible V-Neck Top with Chest Pocket**  
Style 810  
Core Assortment

## Color options for PerforMAX tops.

	Style 810	Style 881	Style 839	Style 829
Black (DKW)	CA	•	•	•
Wine (JWN)	CA	•	•	•
Jade (NTJ)	CA	•	•	•
Evergreen (JEG)	CA	•	•	•
Ceil (NTH)	CA CM	•	•	•
Royal (JRL)	CA	•	•	•
Caribbean (JCB)	CA	•	•	•
Navy (NNT)	CA CM	•	•	•
Misty (NTZ)	CA CM	•	•	•
Charcoal (CHR)	CA CM			•

• = No color-coded neck line  
CA = Angelica color-coded neck line  
CM = Medline color-coded neck line



**Ladies Mock Wrap 2-Pocket Tunic Top with Side Vents and Elastic Back**  
Style 881





**Ladies Pullover V-Neck 3-Pocket Tunic Top**  
 Style 839  
 Core Assortment



**Unisex Snap Front Long Sleeve Knit Cuff 2-Pocket Jacket**  
 Style 829



## Color options for PerforMAX pants.

	Style 800	Style 850	Style 865
Black (DKW)	CA	●	●
Wine (JWN)	CA	●	●
Jade (NTJ)	CA	●	●
Evergreen (JEG)	CA	●	●
Ceil (NTH)	CA CM	●	●
Royal (JRL)	CA	●	●
Caribbean (JCB)	CA	●	●
Navy (NNT)	CA CM	●	●
Misty (NTZ)	CA CM	●	●
Charcoal (CHR)	CA CM		

● = No color-coded drawstrings  
CA = Angelica color-coded drawstrings  
CM = Medline color-coded drawstrings

Best  
Seller



**Unisex Reversible Drawstring 1-Pocket Pant**  
Style 800  
Core Assortment  
Made to order in tall in select colors and sizes



**Unisex Elastic Waistband 3-Pocket Cargo Pant**  
Style 850  
Made to order in tall in select colors and sizes



**Ladies Back Elastic Tie Waistband Modern Fit 5-Pocket Pant**  
Style 865  
Core Assortment  
Made to order in tall and petite in select colors and sizes





## How to build an item number for PerformMAX Scrubs.

**EXAMPLE:** To order Evergreen, scrub pants with cargo pockets, size extra-small, tall:

8	5	0	J	E	G	X	S			T	-		
3 Number Style			3 Letter Fabric Color			1 to 4 Digit Size		+ Optional Code for Petite (P) or Tall (T)		2 Letter Drawstring or Neck Code			
Complete Item Number: <b>850JEGXST</b>													





Style 910 (top)  
and 900 (pants)  
in Ceil

# ComfortEase™

Works as hard as you do.

- On budget, on trend
- Durable scrubs are wrinkle- and fade-resistant
- 65% poly/35% cotton

Style 8851 (top)  
and 8865 (pants)  
in Royal



Durable



Fade resistant



Wrinkle  
resistant



Industrial  
laundry

## Find your fit.

Stocked sizes:  
XS-5XL

Made to order  
in Best Sellers:  
XXS, 6XL



Wrinkle-resistant  
fabric is ready to  
wear right out of  
the wash.

Style 8800 (tunic top)  
and 9351 (pant) in Black

## Color options for ComfortEase tops.

	Style 910	Style 8832	Style 8800	Style 8851	Style 8815
Wine (JWN)	CM	●	●	●	●
Seaspray (JSS)	CM	●	●	●	
Jade (JTJ)	CM	●			
Evergreen (JEG)	CM	●	●	●	●
Caribbean Blue (JCB)	CM	●	●	●	●
Ceil Blue (JTH)	CM	●	●	●	●
Royal Blue (JRL)	CM	● CM	●	●	●
Midnight Blue (JNT)	CM	● CM	●	●	●
Rich Purple (JPP)	CM	●	●	●	●
White (XTQ)	CM	●	●	●	●
Khaki (JKK)	CM	●			
Black (DKW)	CM	●	●	●	

● = No color-coded neck line CM = Medline color-coded neck line

**Best  
Seller**



**Unisex Reversible V-Neck 1-Pocket Top**  
Style 910  
Core Assortment  
Made to order in X-long in select colors and sizes



**Ladies Non-Reversible V-Neck  
2-Pocket Top with Side Vents**  
Style 8800





**Ladies Pullover V-Neck 2-Pocket Tunic Top**  
 Style 8851  
 Core Assortment



**Unisex Snap Front Long Sleeve Knit Cuff 2-Pocket Jacket**  
 Style 8832

Style 8851 (top)  
 and 8865 (pants)  
 in Ceil blue



Best  
Seller

**Unisex Reversible Drawstring 1-Pocket Pant**  
Style 900  
Core Assortment

### Color options for ComfortEase pants.

	Style 900	Style 950	Style 8850	Style 8865	Style 9351
Wine (JWN)	CM	CM	●	●	
Seaspray (JSS)	CM	CM	●	●	
Jade (JTJ)	CM	CM			
Evergreen (JEG)	CM	CM	●	●	●
Caribbean Blue (JCB)	CM	CM	●	●	●
Ceil Blue (JTH)	CM	CM	●	●	
Royal Blue (JRL)	CM	CM	●	●	●
Midnight Blue (JNT)	CM	CM	●	●	●
Rich Purple (JPP)	CM	CM	●	●	
White (XTQ)	CM	CM	●	●	
Black (DKW)	CM	CM	●	●	●

● = No color-coded drawstrings CM = Medline color-coded drawstrings



**Ladies Elastic Waistband Classic Fit Pant with 2 Side Seam Pockets**  
Style 8850



**Unisex Non-Reversible Drawstring 3-Pocket Cargo Pant**  
Style 950  
Made to order in tall in select colors and sizes



**Unisex Non-Reversible Elastic Waistband 3-Pocket Cargo Pant**  
 Style 9351  
 Made to order in tall in select colors and sizes



**Ladies Elastic Waistband Modern Fit 5-Pocket Cargo Pant**  
 Style 8865  
 Core Assortment  
 Made to order in tall and petite in select colors and sizes

## How to build a item number for ComfortEase Scrubs.

**EXAMPLE:** To order a Seaspray, reversible drawstring 1-pocket pant, size M, with Medline drawstring color-coding:

9	0	0	J	S	S	M					-	C	M		
3 to 4 Number Style			3 Letter Fabric Color			1 to 4 Digit Size				+	Optional Code for Petite (P) or Tall (T)			2 Letter Drawstring or Neck Code	
Complete Item Number: <b>900JSSM-CM</b>															



# wORks™

## All-day comfort in the OR.

- Ultra-light, super-soft ringspun fabric
- Fade-resistant; stands up to industrial laundry
- 65% poly/35% cotton



Fade  
resistant



Industrial  
laundry



Ring spun

### Color options for wORks™.

	Style 510	Style 549	Style 500
Black (DKW)	CA CF	CA CF	CA CF
Jade (JTJ)	CA CF	CA CF	CA CF
Ceil (JTH)	CA CF	CA CF	CA CF
Royal (JRL)	CA CF	CA CF	CA CF
Navy (JNT)	CA CF	CA CF	CA CF
Misty (NTZ)	CA CF	CA CF	CA CF

CA = Angelica color-coded neck line or drawstrings  
CF = Fashion Seal color-coded neck line or drawstrings

### Find your fit.

Stocked sizes:  
XS-5XL

Ultra-light  
fabric keeps you  
comfortable in  
the OR.



### How to build an item number for wORks OR Scrubs.

**EXAMPLE:** To order a Black, reversible, one-pocket scrub top, size small, with Fashion Seal color coding:

5	1	0	D	K	W	S				-	C	A
3 Number Style			3 Letter Fabric Color			1 to 4 Digit Size				2 Letter Drawstring or Neck Code		

**Complete Item Number: 510DKWS-CA**



**Unisex Snap Front Long Sleeve Knit Cuff 2-Pocket Jacket**  
Style 549  
Core Assortment



**Unisex Reversible Drawstring 1-Pocket Pant**  
Style 500  
Core Assortment



**Unisex Reversible V-Neck 1-Pocket Top**  
Style 510  
Core Assortment



Style 893 (top)  
and 854 (pants)  
in Charcoal



# AngelStat®

The all-around favorite.

- Our No. 1 scrub
- Softens with every wash
- Durable scrubs; stand up to industrial washing
- Keep track of your scrubs
  - New RFID Stocked Assortment in select styles and colors
- 55% cotton/45% poly



Durable



Softens when  
washed



Industrial  
laundry

## Find your fit.

Stocked sizes:  
XS–5XL

Made to order  
in Best Sellers:  
XXS, 6XL

Fabric softens  
with every wash.

Style M630 (top)  
and M600 (pants)  
in Ceil Blue





**Unisex Reversible V-Neck No Pocket Top**  
Style 612  
Made to Order Sizes: S-3XL



**Unisex Reversible V-Neck 1-Pocket Top**  
Style M610/610/R610  
Core Assortment  
RFID Stocked Assortment in Core Colors



**Unisex Reversible V-Neck 2-Pocket Top**  
Style M630/630



**Ladies Pullover V-Neck 2-Pocket Tunic Top**  
Style 893  
Core Assortment



**Ladies Snap Front Crew Neck 2-Pocket Jacket**  
Style 851



**Unisex Snap Front Knit Cuff 2-Pocket Jacket**  
Style 849/R849  
Core Assortment  
RFID Stocked Assortment in Core Colors

### Color options for AngelStat tops.

	Style M610/ 610	Style R610	Style 849	Style R849	Style 893	Style M630/ 630	Style 851	Style 612
Jade (NTJ)	CA CM	•	• CA	•	•	CA	•	
Ceil Blue (NTH)	CA CM	•	• CA CM	•	•	CA CM	•	CM
Misty (NTZ)	CA CM	•	•	•	•	CA CM	•	
Charcoal (NCC)	CM		•		•	CM		
Regal Purple (NRP)	CA		•		•	CA		
Navy (NNT)	CA CM		• CA CM		•	CA	•	
Sapphire (NHT)	CA CM	•	• CA CM	•	•	CA CM	•	CM
Peacock (NBT)	CA		•		•		•	
Hunter (NHG)	CA		•		•	CA		
Emerald (NJT)	CA		•		•	CA		
Raspberry (NTR)	CA CM		•		•	CA		
Black (DKW)	CA CM		•					

• = No color-coded neck line  
CA = Angelica color-coded neck line  
CM = Medline color-coded neck line





**Unisex Reversible Drawstring No Pocket Pant**  
Style 640  
Made to Order Sizes: S-3XL



**Unisex Reversible Drawstring 1-Pocket Pant**  
Styles M600/600/R600 and 601  
Core Assortment  
601 is made to order in tall in select colors and sizes  
RFID Stocked Assortment in Core Colors



**Unisex Elastic Waistband 2-Pocket Cargo Pant**  
Style 674  
Include M for regular length  
Made to order in long in select colors and sizes



**Ladies Elastic Waistband Inside Drawcord No Pocket Pant**  
Style 854  
Core Assortment

## Color options for AngelStat pants.

	M600/ 600	Style R600	Style 674	Style 854	Style 640	Style 601
Jade (NTJ)	CA CM	•	•	•		
Ceil Blue (NTH)	CA CM	•	•	•	CM	CM
Misty (NTZ)	CA CM	•	•	•		CM
Charcoal (NCC)	CM		•	•		
Regal Purple (NRP)	CA		•			
Navy (NNT)	CA CM		•	•		
Sapphire (NHT)	CA CM	•	•	•	CM	
Peacock (NBT)	CA CM		•	•		
Hunter (NHG)	CA		•	•		
Emerald (NJT)	CA		•			
Raspberry (NTR)	CA CM		•	•		
Black (DKW)	CA CM					

• = No color-coded drawstrings  
CA= Angelica color-coded drawstrings  
CM=Medline color-coded drawstrings

## Accessories



**Reusable Elastic-Back Cap**  
MDTZ1011102AA  
Navy  
Bouffant Type  
Made to Order Item

55% cotton/45% polyester



**Reusable Shoe Covers**  
MDTSHOECOVER  
Size: 12-14 Men's  
Made to Order Item

55% cotton/45% polyester



**Reusable Surgical Cap**  
MDT012116MTY | White cloth ties fasten in back  
Misty Green  
Made to Order Item

55% cotton/45% polyester

## How to build an item number for AngelStat Scrubs.

**EXAMPLE:** To order a Ceil Blue, elastic waist scrub pant with cargo pockets, size medium long:

6	7	4	N	T	H	M				L	-			
3 Number Style			3 Letter Fabric Color			1 to 4 Digit Size				+	Optional Code for Long (L)		2 Letter Drawstring or Neck Code	

**Complete Item Number: 674NTHML**

# Encore™ OR scrubs

## Budget-friendly and built to last.

- Classic style and fit
- Ultra-light comfort
- 55% cotton/45% poly
- Case pack quantities



Durable



Industrial laundry

### Color options for Encore.

	Style 710	Style 700	Style 730
Ceil (PTH)	CF CM	CF CM	CF CM
Jade (PTJ)	CF CM	CF CM	CF CM
Misty (PTZ)	CF CM	CF CM	CM

### Find your fit.

Stocked sizes:  
XS-3XL

CA = Angelica color-coded neck line or drawstrings  
CF = Fashion Seal color-coded neck line or drawstrings  
CM = Medline color-coded neck line or drawstrings

Super-soft  
ring spun fabric



### How to build an item number for Encore Scrubs.

**EXAMPLE:** To order a Misty, reversible, one-pocket scrub top, size XXX-large, with Medline color coding:

7	1	0	p	T	J	X	X	X	L	-	C	M
3 Number Style			3 Letter Fabric Color			1 to 4 Digit Size				2 Letter Drawstring or Neck Code		

**Complete Item Number: 710PTJXXXL-CM**



**Best  
Seller**



**Unisex Reversible V-Neck 1-Pocket Top**  
Style 710  
Core Assortment

**Best  
Seller**



**Unisex Reversible Drawstring 1-Pocket Pant**  
Style 700  
Core Assortment

**Encore**



**Unisex Reversible V-Neck 2-Pocket Top**  
Style 730



# 100% Cotton

## For hyperbaric use.

- Reversible scrubs for maximum versatility
- 100% cotton for added safety in hyperbaric chambers
- Hyperbaric stamping available



100% cotton



One-pocket top



Hyperbaric stamping

### Find your fit.

Stocked sizes:  
S-4XL

### Color options for 100% Cotton.

	Style 649*	Style 648*	Style 659	Style 658
Jade (MJS)	CA	CA		
Ceil (MHS)	CA	CA	CM	CM
Misty (MZS)	CA	CA	CM	CM

CA = Angelica color-coded neck line or drawstrings  
CM = Medline color-coded neck line or drawstrings

\*Styles 648 and 649 are NOT intended for use in hyperbaric units. They contain polyester drawstrings, thread and labels.



Unisex Reversible 1-Pocket Hyperbaric Unit Top  
Style 658



Unisex Reversible 2-Pocket Top  
Style 648



Unisex Reversible Drawstring Hyperbaric Unit Pant  
Style 659



Unisex Reversible Drawstring 1-Pocket Pant  
Style 649

100% Cotton

## How to build an item number for 100% cotton scrubs.

**EXAMPLE:** To order a Misty, reversible, drawstring scrub pant, pre-stamped with “hyperbaric unit”, 100% cotton, size XXL, with Medline color coding:

6	5	9	M	Z	S	X	X	L		-	C	M
3 Number Style			3 Letter Fabric Color			1 to 4 Digit Size				2 Letter Drawstring or Neck Code		

Complete Item Number: **659MZSXXL-CM**





# Lab Coats

Tried-and-true classics made modern.

- Clean tailoring for a classic look
- Handy pockets inside and out
- Optional antimicrobial SilverTouch treatment
  - This product has antimicrobial properties built in to protect the product. This product does not protect users or others against bacteria, viruses, germs or other disease organisms.
- Variety of fabric contents and lengths to suit every style



Durable



Wrinkle resistant



Industrial  
laundry

Multiple pockets  
for extra storage







**Unisex Consultation Poplin 3-Button Lab Coat**  
 Style MDT10  
 1 left chest pocket | 2 lower pockets  
 Length: 30" | Available in 32-58, White (WHT)

80% poly/20% cotton



**Unisex Consultation Poplin Full Zip Front Smock**  
 Style 87005 | 1 left chest pocket | 2 lower pockets | Length: 31"  
 XS-5XL White (QHW) 80% poly/20% cotton  
 XS-3XL Navy (DNW) 65% poly/35% cotton  
 XS-4XL Light Blue (RCW) 65% poly/35% cotton



**Unisex Full Length Poplin 6-Snap Front Lab Coat with Cuff** 80% poly/20% cotton  
 Style 87026  
 1 left chest pocket | 2 lower pockets | Knit cuff and side slashes  
 Length: 42" | Available in XS-3XL, White (QHW)



**Unisex Full Length Poplin 4-Button 1-Snap Lab Coat** 80% poly/20% cotton  
 Style 87050  
 1 left chest pocket | 2 lower pockets | Knit cuff and side slashes  
 Length: 39" | Available in XS-3XL, White (QHW)



Best  
Seller

**Men's Full Length Heavyweight Twill 5-Knot Button Lab Coat**  
Style MDT17

100% cotton

1 pencil-divided left chest pocket | 2 lower pockets  
Knot button back belt and side slashes  
Regular Length: 44" | Available in sizes 28–56, White (WHT)  
Tall Length: 48" | Available in sizes 28–56, White (WHT)



**Men's Full Length Poplin 5-Button Lab Coat**  
Style MDT14

80% poly/20% cotton

1 pencil-divided left chest pocket | 2 lower pockets  
Regular Length: 43" | Available in sizes 34–56, White (WHT)  
Tall Length: 47" | Available in sizes 38–52, White (WHT)



**Women's Consultation Poplin 2-Button Lab Coat**  
Style 88018

80% poly/20% cotton

1 left chest pocket | 2 lower pockets  
Princess seams; not recommended for embroidery  
Length: 29" | Available in 4–30 (dress size), White (QHW)



**Women's Full Length Heavyweight Twill 4-Knot Button Lab Coat**  
Style MDT19

100% cotton

1 left chest pocket | 2 lower pockets | One piece back belt and princess seams  
Length: 38" | Available in sizes 2XS–5XL, White (WHT)



**Women's Full Length Poplin 4-Button Lab Coat**

Style MDT13

1 left chest pocket | 2 lower pockets

2-button adjustable back belt and princess seams

Length: 40" | Available in sizes XS-3XL, White (WHT)

80% poly/20% cotton



**Unisex Staff Length Poplin 5-Button Lab Coat**

Style 83044 | 1 left chest pocket | 2 lower pockets | Side slashes | Length 41"

S-3XL White (QHW) 80% poly/20% cotton

S-3XL Navy (RNN) 65% poly/35% cotton

S-3XL Light Blue (RCW) 65% poly/35% cotton

S-3XL Gray (GRY) 80% poly/20% cotton

Best  
Seller



**Women's Staff Length Poplin 5-Button Lab Coat\***

80% poly/20% cotton

Style MDT11—optional SilverTouch antimicrobial treatment (WHTST)

1 pencil-divided left chest pocket | 2 lower pockets

One piece back belt, princess seams and side slashes

Length: 36" | Available in sizes 2-36 (dress size), White (WHT)

\*The below products have antimicrobial properties built in to protect the product. These products do not protect users or others against bacteria, viruses, germs or other disease organisms.



**Unisex Staff Length Poplin 4-Button Lab Coat** 80% poly/20% cotton  
**with SilverTouch Antimicrobial Treatment\***  
 Style 87052ST-2 lower pockets | Style 87052STIP-2 lower iPad pockets (shown)  
 1 left chest pocket | 2 inside pockets | Sewn-down back belt and side slashes  
 Length: 39" | Available in 2XS-3XL, White



**Men's Staff Length Poplin 5-Button Lab Coat\*** 80% poly/20% cotton  
 Style MDT12-optional SilverTouch antimicrobial treatment (WHTST)  
 1 pencil-divided left chest pocket | 2 lower pockets | Side slashes  
 Length: 39" | Available in sizes 32-60, White (WHT)

## How to build an item number for Lab Coats.

**EXAMPLE:** To order a navy, zip front smock, size M:

8	7	0	0	5	D	N	W	M		
Number Style					3 Letter Fabric Color			1 to 3 Digit Size		
Complete Item Number: <b>87005DNWM</b>										







# Barrier Coats

Added protection.

- Water resistant (tested to AATC 127 and AATCC 42)
- Comfortable and Breathable (tested to ASTM E96)
- Not made with PFOS/PFOA
- Low linting (ISO 19073-10)



Durable



Industrial laundry  
100 wash cycles



Breathable



Moisture resistant



Low-linting



Multiple pockets  
for extra storage

Style MDT046815


**Unisex Barrier Lab Coat**

Style 6623 | 1 left chest pocket | 2 lower pockets  
 XS-5XL White (BQW)  
 XS-5XL Navy (BNW)  
 Style 6623 | Without pockets  
 S-2XL White (BQWNP)  
 S-3XL Navy (NPBNW)

100% polyester front,  
 55% cotton/45%  
 polyester back


**Unisex AngelStat Barrier Lab Coat**

Style 6620BLH | 2 lower patch pockets  
 XS-4XL White  
 Style 6221BLC | 2 lower patch pockets  
 XS-4XL Cell Blue

99% polyester/1% carbon front,  
 55% cotton/45% polyester back


**Men's ResiStat Protective Lab Coat**

Style MDT046805 | 1 left chest pocket | 2 lower pockets  
 XS-3XL White  
 Style MDT046805NP | Without pockets  
 XS-4XL White (NP)

99% polyester/  
 1% carbon fiber  
 fluid-resistant  
 material


**Men's ResiStat Protective Lab Coat**

Style MDT046811 | 1 left chest pocket | 2 lower pockets  
 XS-3XL Light Blue (BLC)

99% polyester/  
 1% carbon fiber  
 fluid-resistant  
 material





**Women's ResiStat Protective Lab Coat**  
Style MDT046815 | 1 left chest pocket | 2 lower pockets  
XS-3XL White

99% polyester/  
1% carbon  
front and back



**Unisex Barrier Lab Coat**  
Style MDT046883 | 2 lower pockets | Short  
XS-3XL White

100% polyester front,  
55% cotton/45%  
polyester back

# Customizations

Available upon request, these custom features can be added at a minimum order quantity.

- No side slit opening to pants
- No cuffs
- Elastic band cuffs
- Choose from existing Barrier Coat fabrics and colors
- No pockets

# Theramask<sup>®</sup>

## reusable face masks

Copper CuTEC<sup>®</sup> technology helps improve hygiene and enhance the feel on skin.

### Features and benefits

- Two layers of soft material
- Adjustable nose wire offers a comfortable, secure fit
- CuTEC copper technology helps create a healthier skin environment and inhibits bacterial growth
- 82% copper yarn, 15% nylon, 3% non-latex ear loop
- Adult size mask is made in the USA
- Machine washable up to 30 times

Length is folded on half and measured at curve

**9.125"–9.875"**



Width folded on the half and measured along at curve

**4.25"–5"**

**Theramask is NOT intended for occupational use**

Note: Not for use in surgical settings or where other hazardous fluids, may be expected; use in a clinical setting where the infection risk level through inhalation exposure is high; and use in the presence of a high intensity heat source or flammable gas. This product makes no claims that it will cure or prevent Coronavirus, Influenza, or COVID-19. These statements have not been evaluated by the Food and Drug Administration. This product is not intended to diagnose, treat, cure, or prevent any disease.



# Take control of your scrubs with ScrubTrak

ScrubTrak is an automated system that dispenses scrubs and tracks inventory so you don't have to.



## Reduce scrub loss

Reduce inventory shrinkage by up to 90% and laundering costs by 35%.<sup>1</sup>



## Increase productivity

Similar to a vending machine, ScrubTrak is easy to use so staff can focus on delivering care, not what to wear.



## Boost infection control and compliance

Comply with AORN's recommendation for laundering healthcare textiles to avoid the spread of infectious bacteria.

**Small Footprint.** Each ScrubTrak unit measures 78" high x 38 3/4" wide x 23 1/4" deep.



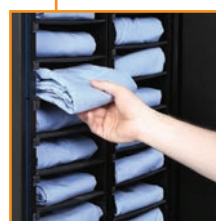
**High Capacity.** ScrubTrak's dispensing unit holds up to two satellite units with a capacity of 128 scrubs per dispenser.



**Rapid Return.** Up to three soiled scrubs can be returned per session in just seconds.



**Flexible and Rapid Dispensing.** ScrubTrak dispenses clean scrubs in seconds with mix-and-match sizing options.



**Low Maintenance.** Simply fold and stow the items to be dispensed.

1. Intelligent Dispensing Solutions website  
<https://www.scrubtrak.com/inventory-management-control>



# CabiNet RFID Machines

Take back control of assets while reducing inventory costs.



## Reduce linen loss

Help staff and vendors track scrubs, linens, gowns, lab coats, towels, mops and more.



## Track item to individual users

Check usage, adjust credits and add users all in one platform.



## Intelligent system

Stock levels viewed Online with automated alerts.

**High Capacity.** Holds up to 350 scrubs fitted with RFID Chips.



**Low Maintenance.** Fast to re-stock and load, no pairing necessary.



**Convenient Usage.** Easy to use, no size entry required.

**Small Footprint.** Each CabiNet unit measures 6 1/2' high x 4" wide x 2' deep.



**Easy Access.** Two sliding doors open with shelves.

**Flexible Organization.** Dispenser and Return Unit can be placed separately.

**Note:** Installation & Training fees will be charged separately and vary depending on configuration. Warranty solutions also available upon request.

# SaniCenter vending machine

PPE and more—at the push of a button



**Customize with your  
facility branding**



**Protect visitors and staff  
with push-button ease**



**Contact-free, on demand**

## Features

- LED lighting provides product visibility
- Large, easy-to-use customer interface features LED display
- Depending on the machine, patrons can pay with credit/debit or mobile, while staff can access with badge, proximity card or barcode reader
- Keeps customers satisfied with money-back vend delivery sensor system
- Additional coils, motors and dividers available—customize a configuration to suit your unique product selection
- Americans with Disabilities Act (ADA) compliant

**Design can  
be customized  
with your facility  
branding.**



PPECCMACHINES

Credit, debit and  
mobile reader



PPEIVMACHINEL

Proximity card/  
Barcode reader

These machines are designed to dispense PPE products. Medline is not responsible for any non-PPE products stocked in the machine.

**Scrub into style  
and comfort.**  
Contact your Medline  
Representative to  
outfit your staff.



**Medline Industries, Inc. Three Lakes Drive, Northfield, IL 60093**  
Medline United States  
1-800-MEDLINE (633-5463)  
medline.com | info@medline.com

**Medline Canada**  
1-800-268-2848 | medline.ca | canada@medline.com  
**Medline México**  
01-800-831-0898 | medlinemexico.com | mexico@medline.com

Follow us    